

**MAXELL**

**AUFINETIRE CO., LIMITED**

☎ +86-532-88960296 +86-532-88962532

✉ info@aufine.com 🌐 www.maxelltire.com

**MAXELL**



**TRUCK & BUS  
TYRES**



# PATTERN SELECTION GUIDE



## Steer / All position



## Trailer



Regional

## Steer / All position



## Drive



## Trailer



Mix

## Steer / All position



## Drive



Off Road

## Drive



Urban Bus

## Steer / All position



Winter

## Drive





# MAXELL TYRE TECHNOLOGY



## 4BS

### FOUR BELTS STRUCTURE

- Enhanced even wear
- Longer mileage
- Better handling and more comfortable



## WTW

### WIDER TREAD WIDTH

- Increased tire contact area
- Optimized pressure distribution
- Higher mileage
- Better handling
- Even wear



## DLTC

### DUAL LAYER TREAD COMPOUND

- High silica formulation compound
- Premium quality rubber from Malaysia and Thailand
- Carbon black from CABOT
- High mileage
- Low heat generation for better rolling resistance and integrity
- Better resistance at low temperature
- Even wear



## FRC

### FULLY RUBBERIZED CORD FOR BELT

- Oxidation prevention
- Long casing life



## UT

### ULTRA-STRENGTH STEEL WIRE

- 100% from BEKAERT
- Regroovable
- Stronger load capability
- Longer mileage



## BWC

### BEAD WRAPPED CHAFER

- Greater resistance
- Better retreadability





## ► MATERIAL SOURCING



Natural Rubber:  
Thailand / Malaysia

Steel Cord: BEKAERT

Carbon Black: Cabot

## ► Tyre Inspection



Specification records of each tire



X-ray machine



Appearance inspector



Uniformity tester



Dynamic balance tester



Laser shearography detector

## TYRE MARKINGS

Nominal aspect ratio  
or series (H/S\*100)

295/80

R

22.5

154/150

J

Nominal section  
width  
(or width code)

Construction  
code

Nominal rim  
diameter (Code)

Load indices  
(single / dual)

Speed  
symbol

Ply rating. Indicates different  
versions (load capacity/ inflation  
pressure) of tyres having the  
same size designation

11.00

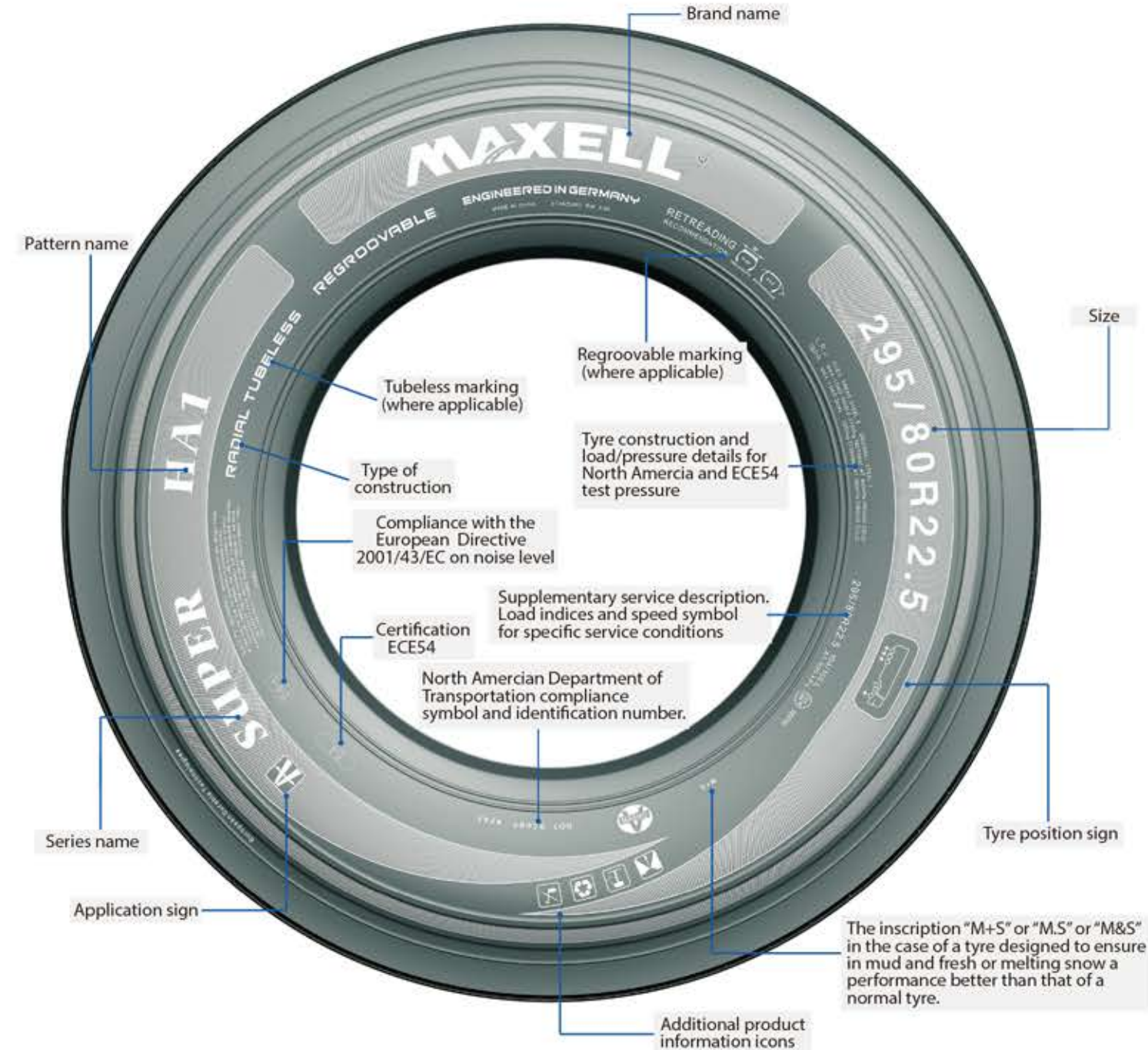
R

20

149/146

J

16PR







**LONG HAUL**



**HA1**

**HA2**

**HA3**

**HA11**

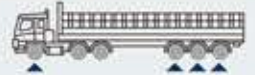
**HA13**

**HT1**

**LONG HAUL**



# SUPER HA1



- The new product image of bionic design gives good visual impact.
- Increased tread width for a correct distribution of footprint contact pressure, able to improve even wear and ensure high mileage.
- Optimized pattern pitch distribution, especially with stepped design, provides stronger handling wet grip and low-noise performance.
- The special shoulder contour ensures optimal even wear and higher mileage.

Size	PR	Load Range	Load Index	Speed Rating	Max Speed mph	Tread Depth		Standard Rim	Max Tire Load Single				Max Tire Load Dual			
						32nds	mm		lbs.	psi.	kg.	kPa.	lbs.	psi.	kg.	kPa.
295/80R22.5	18	J	154/154 (152/148)	L (M)	75	20.8	16.5	9.00	8270	123	3750	850	7390	123	3350	850
315/80R22.5	20	L	156/150 (154/150)	L (M)	75	19.5	15.5	9.00	8220	123	4000	850	7390	123	3350	850
385/65R22.5	24	N	164( 162)	J ( K )	62	20.8	16.5	11.75	11000	138	5000	950	—	—	—	—
385/55R22.5	24	N	164( 162)	J ( K )	62	19.5	15.5	12.25	11000	138	5000	950	—	—	—	—

# SUPER HA2



- Four vertical straight grooves design improves the handling and braking ability on the wet surface.
- ATLM Technology reduces the lateral movement of tire, which improves the tire mileage.
- The central transversal groove design allows a correct distribution of footprint contact pressure and ensures optimal.
- Widened shoulder design promotes even wear.

Size	PR	Load Range	Load Index	Speed Rating	Max Speed mph	Tread Depth		Standard Rim	Max Tire Load Single				Max Tire Load Dual			
						32nds	mm		lbs.	psi.	kg.	kPa.	lbs.	psi.	kg.	kPa.
315/70R22.5	18	J	156/150 (154/150)	L ( M )	75	20.2	16	9.00	8820	130	4000	900	7830	130	3550	900



# SUPER HA3



- Unique pattern design, more beautiful and generous.
- The design of four zigzag grooves provides excellent handling performance, effectively prevents stones from being trapped, and improves the cleaning ability of the tire itself
- The design of wide driving surface and deep groove combined with the tread adopts ultra-high wear-resistant formula, endowing the product with super wear-resistant.
- With a new profile design, the tire contact pressure distribution is more uniform, and the anti-eccentric wear performance is better.

Size	PR	Load Range	Load Index	Speed Rating	Max Speed mph	Tread Depth		Standard Rim	Max Tire Load Single				Max Tire Load Dual			
						32nds	mm		lbs.	psi.	kg.	kPa.	lbs.	psi.	kg.	kPa.
385/65R22.5	24	N	164(162)	J(K)	62	20.8	16.5	11.75	11000	138	5000	950	—	—	—	—

# SUPER HA13



- Wider tread design and better wear resistance compound provide longer mileage and excellent durability.
- The characteristic groove design reinforces stability and rapid drainage.
- Longitudinal ribs design provides excellent handling performance.
- Special shoulder tread contour design allows a correct distribution of footprint contact pressure and ensures optimal even wear and higher pressure.

Size	PR	Load Range	Load Index	Speed Rating	Max Speed mph	Tread Depth		Standard Rim	Max Tire Load Single				Max Tire Load Dual			
						32nds	mm		lbs.	psi.	kg.	kPa.	lbs.	psi.	kg.	kPa.
9.5R17.5	18	J	143/141	J	62	17.1	13.6	6.75	6005	127	2725	875	5675	127	2575	875
275/70R22.5	16	H	148/145	L	75	19.0	15.1	8.25	6945	130	3150	900	6395	130	2900	900

# SUPER HA11



- Robust longitudinal ribs grant wet grip, road holding and steering precision, shorter braking distance.
- Stress relief sipes fight the initiation and spread of irregular wear on the main ribs by absorbing rib edge stresses within the footprint.
- Wider shoulder design for extra protection from curb damage.
- The special shoulder contour ensures optimal even wear and higher mileage.

Size	PR	Load Range	Load Index	Speed Rating	Max Speed mph	Tread Depth		Standard Rim	Max Tire Load Single				Max Tire Load Dual			
						32nds	mm		lbs.	psi.	kg.	kPa.	lbs.	psi.	kg.	kPa.
11R22.5	16	H	148/145	M	81	18.4	14.6	8.25	6940	123	3150	850	6395	123	2900	850
11R24.5	16	H	149/146	M	81	18.4	14.6	8.25	7160	120	3250	830	6610	120	3000	830
215/75R17.5	16	H	135/133	J	62	15.2	12.1	6.00	4805	125	2180	865	4540	125	2060	865
235/75R17.5	18	J	143/141	J	62	15.2	12.1	6.75	6005	125	2725	865	5675	125	2575	865
295/60R22.5	18	J	150/147(149/146)	K(L)	68	18.4	14.6	9.00	7390	130	3350	900	6780	130	3075	900
315/60R22.5	18	J	152/148	L	75	18.4	14.6	9.00	7830	130	3550	900	6940	130	3150	900

# SUPER HT1



- Innovative tread design with circumferential waterdrop sipes below the three central tread grooves, ensures excellent grip and stability on both wet and dry surfaces.
- Increased running surface provides better ground contact area for higher mileage.
- Zigzag groove designed to deliver great lateral holding as well as high tear resistance.
- Widened shoulder prevents irregular shoulder wear.

Size	PR	Load Range	Load Index	Speed Rating	Max Speed mph	Tread Depth		Standard Rim	Max Tire Load Single				Max Tire Load Dual			
						32nds	mm		lbs.	psi.	kg.	kPa.	lbs.	psi.	kg.	kPa.
385/65R22.5	24	N	164(162)	J(K)	62	17.0	13.5	11.75	11000	138	5000	950	—	—	—	—





**REGIONAL**



**LA1 LA3 LA266 LF21 LD2**



**LD3 LD5 LD7 LD117 LD21**



**LD23 LD25 LD26 LT1 LT23**



**LT258 LT288 LT260 MAE8**



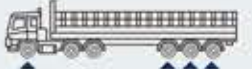
# SUPER LA1



- Increased tread width promotes mileage.
- 4 grooves combined with wave and zig-zag shape grant road holding and steering precision.
- Special transversal sipes promote wet grip and shorter braking distance.
- Ejectors at the bottom of grooves prevent stones trapping thus ensuring better durability.

Size	PR	Load Range	Load Index	Speed Rating	Max Speed mph	Tread Depth		Standard Rim	Max Tire Load Single				Max Tire Load Dual			
						32nds	mm		lbs.	psi.	kg.	kPa.	lbs.	psi.	kg.	kPa.
225/80R17.5	16	H	123/122	L	75	19.5	15.5	6.75	3415	102	1550	700	3305	102	1500	700

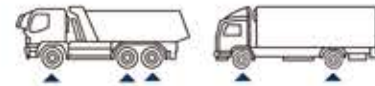
# SUPER LA266



- The three-line zigzag pattern groove design, combined with the tread steel sheet design, provides superior grip performance.
- The semi-open shoulder pattern design improves the grip of the tire and also reduces the heat generation of the shoulder, reducing the occurrence of shoulder void problems.
- The design of the zigzagging corner pattern groove wall can effectively prevent the tread from trapping stones, and has strong applicability to road conditions.

Size	PR	Load Range	Load Index	Speed Rating	Max Speed mph	Tread Depth		Standard Rim	Max Tire Load Single				Max Tire Load Dual			
						32nds	mm		lbs.	psi.	kg.	kPa.	lbs.	psi.	kg.	kPa.
12R22.5	18	J	152/149	L	75	18.4	14.6	9.00	7830	135	3550	930	7160	135	3250	930

# SUPER LA3



- Robust tread pattern design improves cut resistance and durability.
- Tread width and groove depth enhance robustness and longer mileage.
- The tough ties between blocks provide powerful traction in on and off road services.
- Optimized shoulder design extends tread life.

Size	PR	Load Range	Load Index	Speed Rating	Max Speed mph	Tread Depth		Standard Rim	Max Tire Load Single				Max Tire Load Dual			
						32nds	mm		lbs.	psi.	kg.	kPa.	lbs.	psi.	kg.	kPa.
10.00R20	18	J	149/146	K	68	20.8	16.5	7.5	7160	120	3250	830	6610	120	3000	830
11.00R20	18	J	152/149	K	68	20.8	16.5	8.0	7830	135	3550	930	7160	135	3250	930

# SUPER LF21



- Special tread design with high wear-resistance formula improves crown rigidity and reduces rolling resistance for fuel efficiency.
- The ribbed design provides excellent handling and drainage performance.
- Special shoulder design provides excellent transformation performance.
- Adopt high wear -resistant formula to improve service life.

Size	PR	Load Range	Load Index	Speed Rating	Max Speed mph	Tread Depth		Standard Rim	Max Tire Load Single				Max Tire Load Dual			
						32nds	mm		lbs.	psi.	kg.	kPa.	lbs.	psi.	kg.	kPa.
275/80R22.5	18	J	149/146	M	81	18.4	14.6	8.25	7160	123	3250	850	6610	123	3000	850
315/70R22.5	18	J	154/150 (152/148)	L(M)	75	18.4	14.6	9.00	8270	130	3750	900	7390	130	3350	900



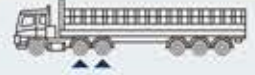
# SUPER LD2



- Directional wide pattern with deeper groove design effectively improves high mileage, uniform wear and better traction.
- Optimized distribution of footprint contact pressure, able to improve even wear and ensure high mileage.
- Special 3D sipes in tread block provides enhanced grip and traction performance in dry and wet conditions.
- Double-wave and raindrop sipes design ensures strong traction on wet road surface.
- Pump sipes on block provides greater resistance to accidental damage.

Size	PR	Load Range	Load Index	Speed Rating	Max Speed mph	Tread Depth		Standard Rim	Max Tire Load Single				Max Tire Load Dual			
						32nds	mm		lbs.	psi.	kg.	kPa.	lbs.	psi.	kg.	kPa.
295/80R22.5	18	J	154/15 (152/148)	L(M)	75	25.8	20.5	9.00	8270	123	3750	850	7160	130	3250	900
315/80R22.5	20	L	156/150 (154/150)	L(M)	75	27.7	22	9.00	8820	123	4000	850	7390	123	3350	850
315/70R22.5	20	L	156/150 (154/150)	L(M)	75	25.2	20	9.00	8820	130	4000	900	7390	130	3350	900

# SUPER LD5



- The wide tread combined with high saturation pattern design can effectively improve the wear resistance of the tire.
- During use, the 3D pattern design can not only produce a self-locking effect in pattern, but also improves the rigidity of the tire tread and effectively improves the tire's anti-wet skid performance.
- Optimize the distribution of ground pressure, effectively prevent abnormal wear, and further increase the mileage of tires.

Size	PR	Load Range	Load Index	Speed Rating	Max Speed mph	Tread Depth		Standard Rim	Max Tire Load Single				Max Tire Load Dual			
						32nds	mm		lbs.	psi.	kg.	kPa.	lbs.	psi.	kg.	kPa.
295/80R22.5	20	L	154/149	L	75	25.2	20	9.00	8270	123	3750	850	7160	123	3250	850

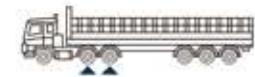
# SUPER LD3



- Special tread pattern with completely new tread block pitch sequence guarantees high mileage, low rolling resistance, uniform wear and better traction.
- Increased tread width and groove depth to enhance mileage.
- Special open shoulder design provides outstanding traction and promotes even wear.
- Transversal grooves with optimized geometry offer excellent even wear and easy stone ejection.

Size	PR	Load Range	Load Index	Speed Rating	Max Speed mph	Tread Depth		Standard Rim	Max Tire Load Single				Max Tire Load Dual			
						32nds	mm		lbs.	psi.	kg.	kPa.	lbs.	psi.	kg.	kPa.
12R22.5	18	J	152/149	L	75	28.0	22.2	9.00	7830	135	3550	930	7160	135	3250	930
11R22.5	18	J	149/146	L	75	25.7	20.4	8.25	7160	135	3250	930	6610	135	3000	930

# SUPER LD7



- Special tread pattern design with completely new tread block pitch sequence provides strong traction.
- The tire bar between blocks is designed to enhance the overall rigidity of the tire and provide longer mileage.
- The design of the horizontal sipes grant wet grip and ensure the safety of driving.
- Special open shoulder design provides outstanding traction and grip ability.

Size	PR	Load Range	Load Index	Speed Rating	Max Speed mph	Tread Depth		Standard Rim	Max Tire Load Single				Max Tire Load Dual			
						32nds	mm		lbs.	psi.	kg.	kPa.	lbs.	psi.	kg.	kPa.
315/70R22.5	18	J	154/152 (152/148)	L(M)	75	26.0	20.6	9.00	8270	130	3750	900	7610	130	3450	900



# SUPER LD21



- Big block pattern design delivers extended treadlife, superb traction and exceptional durability.
- Wide and deep transversal grooves provide road holding and traction on slippery surface.
- Robust shoulder design ensures resistance to tears and lacerations.
- High wear-resistant formula enhances wear resistance and ensure longer span life.

Size	PR	Load Range	Load Index	Speed Rating	Max Speed mph	Tread Depth		Standard Rim	Max Tire Load Single				Max Tire Load Dual			
						32nds	mm		lbs.	psi.	kg.	kPa.	lbs.	psi.	kg.	kPa.
8.25R16LT	16	H	128/124	M	81	17.1	13.6	6.50H	3970	112	1800	770	3525	112	1600	770
8.25R20	16	H	139/137	M	81	19.0	15.1	6.5	5355	135	2430	930	5070	135	2300	930
9.00R20	16	H	144/142	K	68	19.0	15.1	7.0	6175	130	2800	900	5850	130	2650	900
10.00R20	18	J	149/146	K	68	20.7	16.4	7.5	7160	135	3250	930	6610	135	3000	930
11.00R20	18	J	152/149	K	68	20.7	16.4	8.0	7830	135	3550	930	7160	135	3250	930
12.00R20	20	L	156/153	J	62	21.9	17.4	8.5	8820	130	4000	900	8050	130	3650	900
215/75R17.5	16	H	135/133	J	62	17.1	13.6	6.00	4805	125	2180	865	4540	125	2060	865
235/75R17.5	18	J	143/141	J	62	17.1	13.6	6.75	6005	125	2725	865	5675	125	2575	865
11R22.5	16	H	148/145	M	81	25.7	20.4	8.25	6940	123	3150	850	6395	123	2900	850
315/70R22.5	18	J	154/150 (152/148)	L(M)	75	25.7	20.4	9.00	8270	130	3750	900	7390	130	3350	900
275/80R22.5	18	J	149/146	M	81	21.9	17.4	8.25	7160	123	3250	850	6610	123	3000	850
315/80R22.5	20	L	156/150	L	75	25.7	20.4	9.00	8820	123	4000	850	7390	123	3350	850

# SUPER LD23



- Increased tread width and groove depth enhance longer mileage.
- Asymmetrical block pattern design offers excellent driving force, less skidding and safer driving.
- Robust shoulder blocks optimized sectional transversal grooves ensure low rolling resistance.
- Special open shoulder design provides outstanding traction and promotes even wear.

Size	PR	Load Range	Load Index	Speed Rating	Max Speed mph	Tread Depth		Standard Rim	Max Tire Load Single				Max Tire Load Dual			
						32nds	mm		lbs.	psi.	kg.	kPa.	lbs.	psi.	kg.	kPa.
295/60R22.5	18	J	150/147 (149/146)	K (L)	68	21.9	17.4	9.00	7390	130	3350	900	6780	130	3075	900
315/60R22.5	18	J	152/148	L	75	22.6	17.9	9.00	7830	130	3550	900	6940	130	3150	900

# SUPER LD117

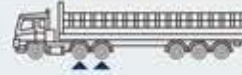


- Long-distance wear-resistant formula design and application, suitable for all seasons.
- Extra-wide tread helps provide stability while helping to improve handling and mileage.
- Full 28/32nds tread depth helps provide long original tread life.
- Wide, open shoulder grooves help deliver additional traction balanced with tread life.

Size	PR	Load Range	Load Index	Speed Rating	Max Speed mph	Tread Depth		Standard Rim	Max Tire Load Single				Max Tire Load Dual			
						32nds	mm		lbs.	psi.	kg.	kPa.	lbs.	psi.	kg.	kPa.
11R22.5	16	H	146/143	L	75	28.3	22.5	8.25	6610	120	3000	830	6005	120	2725	830



# SUPER LD25



- Hybrid pattern design with closed shoulder ensures excellent driving performance.
- Four vertical lines pattern and ladder-shaped trenchwall design with special rubber formula provides better tire heat dissipation performance.
- Large angle trench wall can effectively prevent the tread groove cracks.
- Cut and chip resistant compound makes the tire more durable and longer tire life.

Size	PR	Load Range	Load Index	Speed Rating	Max Speed mph	Tread Depth		Standard Rim	Max Tire Load Single				Max Tire Load Dual			
						32nds	mm		lbs.	psi.	kg.	kPa.	lbs.	psi.	kg.	kPa.
11R22.5	16	H	146/143	L	75	24.4	19.4	8.25	6610	120	3000	830	6005	120	2725	830
385/65R22.5	20	L	160	J	62	20.7	16.4	11.75	9920	130	4500	900	—	—	—	—
425/65R22.5	20	L	165	J	62	20.7	16.4	13.00	11350	120	5150	825	—	—	—	—

# SUPER LT1



- Wide footprint tread design promotes mileage.
- Optimized zig-zag central grooves promote steering precision and provide strong handling ability on both wet and dry roads.
- Lateral grooves with built-in stone ejectors prevent stone trapping and enhance tear resistance, thus extending the lifespan of tires.
- Widened tread shoulder design reduces rubber movement ensuring optimal even wear.

Size	PR	Load Range	Load Index	Speed Rating	Max Speed mph	Tread Depth		Standard Rim	Max Tire Load Single				Max Tire Load Dual			
						32nds	mm		lbs.	psi.	kg.	kPa.	lbs.	psi.	kg.	kPa.
385/65R22.5	24	N	164(162)	J(K)	62	21.4	17	11.75	11000	138	5000	950	—	—	—	—
385/55R22.5	24	N	164(162)	J(K)	62	19.5	15.5	12.25	11000	138	5000	950	—	—	—	—

# SUPER LD26



- Dual compound tread promotes low rolling resistance for excellent fuel economy and long casing life.
- Connective strengthen bars control movement of the tread blocks for low rolling resistance and optimal even wear.
- Groove bottom protectors help prevent stone drilling that ensuring better durability.
- Closed shoulder design fights irregular wear for optimal even wear and higher mileage.

Size	PR	Load Range	Load Index	Speed Rating	Max Speed mph	Tread Depth		Standard Rim	Max Tire Load Single				Max Tire Load Dual			
						32nds	mm		lbs.	psi.	kg.	kPa.	lbs.	psi.	kg.	kPa.
11R22.5	16	H	146/143	L	75	25.7	20.4	8.25	6610	120	3000	830	6005	120	2725	830
11R24.5	16	H	149/146	L	75	25.7	20.4	8.25	7160	120	3250	830	6610	120	3000	830

# SUPER LT23

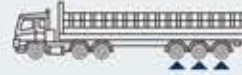


- Wide-based tread design ensures excellent handling of the tires.
- Four main groove designs provide excellent resistance to slip and low noise.
- Large shoulders, wavy tread patterns designed for more even wear.
- High wear-resistant formula improves overall tire wear.

Size	PR	Load Range	Load Index	Speed Rating	Max Speed mph	Tread Depth		Standard Rim	Max Tire Load Single				Max Tire Load Dual			
						32nds	mm		lbs.	psi.	kg.	kPa.	lbs.	psi.	kg.	kPa.
385/55R22.5	20	L	160(158)	J(K)	62	20.0	15.9	12.25	9920	130	4500	900	—	—	—	—
425/65R22.5	20	L	165	J	62	20.0	15.9	13.00	11350	120	5150	825	—	—	—	—



# SUPER LT258



- Four straight groove pattern design provides excellent handling and drainage, making driving safer.
- Optimizing pattern design to make the grounding pressure distributed, effectively prevents abnormal wear and provides longer driving range.
- The new anti-stone clamping design at the bottom of the grooves effectively prevents the stone trapping and improves the service life of the tire.

Size	PR	Load Range	Load Index	Speed Rating	Max Speed mph	Tread Depth		Standard Rim	Max Tire Load Single				Max Tire Load Dual			
						32nds	mm		lbs.	psi.	kg.	kPa.	lbs.	psi.	kg.	kPa.
12R22.5	18	J	152/149	L	75	21.3	16.9	9.00	7830	135	3550	930	7160	135	3250	930

# SUPER LT260



- Four longitudinal grooves are designed to provide excellent steering and drainage performance at high speeds, making driving safer
- The pattern groove adopts asymmetric large-angle design, which can effectively reduce the situation of the pattern groove containing stones and improve the service life of the tire.
- New rubber formula, low heat, more fuel saving, environmental protection.

Size	PR	Load Range	Load Index	Speed Rating	Max Speed mph	Tread Depth		Standard Rim	Max Tire Load Single				Max Tire Load Dual			
						32nds	mm		lbs.	psi.	kg.	kPa.	lbs.	psi.	kg.	kPa.
12R22.5	18	J	152/149	L	75	18.4	14.6	9.00	7830	135	3550	930	7160	135	3250	930

# SUPER LT288



- Robust longitudinal ribs grant wet grip, road holding and steering precision, shorter braking distance.
- Special functional sipes provide excellent grip and high mileage.
- The special shoulder tread contour allows a correct distribution of footprint contact pressure and ensures optimal even wear and higher mileage.
- Reinforced sidewall with higher thickness and special compound ensures high impact resistance and durability.

Size	PR	Load Range	Load Index	Speed Rating	Max Speed mph	Tread Depth		Standard Rim	Max Tire Load Single				Max Tire Load Dual			
						32nds	mm		lbs.	psi.	kg.	kPa.	lbs.	psi.	kg.	kPa.
295/60R22.5	18	J	150/147	K	68	18.4	14.6	9.00	7390	130	3350	900	6780	130	3075	900

# SUPER MAE8



- Longitudinal straight groove and zigzag groove are designed together, taking into account braking and fuel-saving performance, effectively reducing braking distance and saving fuel costs
- Groove bottom protectors help prevent stone drilling than ensuring better durability.
- The small pattern steel sheet design on tire shoulder can effectively improve the tire's skid resistance and make driving safer.
- Unique tread compound design for longer mileage.

Size	PR	Load Range	Load Index	Speed Rating	Max Speed mph	Tread Depth		Standard Rim	Max Tire Load Single				Max Tire Load Dual			
						32nds	mm		lbs.	psi.	kg.	kPa.	lbs.	psi.	kg.	kPa.
12.00R24	20	L	160/157	K	68	18.3	14.5	8.5	9920	130	4500	900	9090	130	4125	900





# URBAN BUS



**UA82**

# SUPER UA82



- 4 longitudinal grooves design provides good handling performance.
- Optimize sipes design provides better wet skid resistance.
- Special tread wear-resistant formula design to ensure wear mileage.
- Strengthen carcass steel wire design, use safer.



Size	PR	Load Range	Load Index	Speed Rating	Max Speed mph	Tread Depth		Standard Rim	Max Tire Load Single				Max Tire Load Dual			
						32nds	mm		lbs.	psi.	kg.	kPa.	lbs.	psi.	kg.	kPa.
10R22.5	16	H	144/142	L	75	21.9	17.4	7.50	6175	130	2800	900	5840	130	2650	900
11R22.5	18	J	149/146	J	62	25.7	20.4	8.25	7160	135	3250	930	6610	135	3000	930
275/70R22.5	18	J	152/148	F	50	21.3	16.9	8.25	7830	130	3550	900	6940	130	3150	900
215/75R17.5	18	J	135/133	J	62	19	15.1	6.00	4805	123	2180	850	4540	123	2060	850
235/75R17.5	18	J	143/141	J	62	17.1	13.6	6.75	6005	127	2725	875	5675	127	2575	875
295/80R22.5	20	L	154/149	J	62	21.4	17	9.00	8270	123	3750	850	7160	123	3250	850





**WINTER**



**WD2**



**WD7**

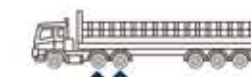
# SUPER WD2



- Directional tread design enhances snow and ice traction.
- 3D siping design for excellent stability and powerful traction in dry and slippery conditions.
- Open shoulder design effectively drain water and improves grip.
- Special compound formulation to provide resistance at low temperature.

Size	PR	Load Range	Load Index	Speed Rating	Max Speed mph	Tread Depth		Standard Rim	Max Tire Load Single				Max Tire Load Dual			
						32nds	mm		lbs.	psi.	kg.	kPa.	lbs.	psi.	kg.	kPa.
11R24.5	16	H	149/146	M	81	28.3	22.5	8.25	7160	120	3250	830	6610	120	3000	830

# SUPER WD7



- 3 dimensional siping technology helps provide exceptional traction on dry and slippery surfaces. Over 1,300 biting edges combine to help provide excellent levels of traction the 3 dimensional sipes lock together for the stability normally associated with solid tread blocks.
- Extra-wide tread helps provide stability while helping to improve handling and mileage.
- Full 28/32nds tread depth helps provide long original tread life.
- Wide, open shoulder grooves help deliver additional traction balanced with tread life.

Size	PR	Load Range	Load Index	Speed Rating	Max Speed mph	Tread Depth		Standard Rim	Max Tire Load Single				Max Tire Load Dual			
						32nds	mm		lbs.	psi.	kg.	kPa.	lbs.	psi.	kg.	kPa.
11R22.5	16	H	146/143	L	75	28.3	22.5	8.25	6610	120	3000	830	6005	120	2725	830





MIX



MA1



MA31



MA32



MA321



MA358



MD2



MD6++



MIX D8



MD818



MD9



MD301



MD363



MD398



MD318



MD688



MRY8



# SUPER MA1



- Unique tread formula effectively improves puncture resistance.
- The grip angle of the tire reduces rolling resistance for improved fuel economy.
- The special groove design ensures driving stability and improves self-cleaning capabilities.
- The strengthened shoulder ribs and protrusions within the grooves improve scratch resistance and uniform wear.

Size	PR	Load Range	Load Index	Speed Rating	Max Speed mph	Tread Depth		Standard Rim	Max Tire Load Single				Max Tire Load Dual			
						32nds	mm		lbs.	psi.	kg.	kPa.	lbs.	psi.	kg.	kPa.
7.50R16LT	14	G	122/118	K	68	18.4	14.6	6.00G	3305	112	1500	770	2910	112	1320	770
8.25R16LT	16	H	128/124	K	68	20.0	15.9	6.50H	3970	112	1800	770	3525	112	1600	770
8.25R20	16	H	139/137	K	68	20.0	15.9	6.5	5355	135	2430	930	5070	135	2300	930
9.00R20	16	H	144/142	K	68	20.7	16.4	7.0	6175	130	2800	900	5850	130	2650	900
10.00R20	18	J	149/146	J	62	22.6	17.9	7.5	7160	135	3250	930	6610	135	3000	930
11.00R20	18	J	152/149	K	68	22.6	17.9	8.0	7830	135	3550	930	7160	135	3250	930
12.00R20	20	L	156/153	J	62	22.6	17.9	8.5	8820	130	4000	900	8050	130	3650	900
12.00R20	22	M	158/155 (156/153)	F (J)	50	22.6	17.9	8.5	9370	140	4250	970	8540	140	3875	970

# SUPER MA32



- Wide tread cap with reinforced carcass and bead structure design provides tires with outstanding durability.
- Big block pattern design provides high road holding and traction.
- Robust shoulder blocks ensure resistance to tears and lacerations.

Size	PR	Load Range	Load Index	Speed Rating	Max Speed mph	Tread Depth		Standard Rim	Max Tire Load Single				Max Tire Load Dual			
						32nds	mm		lbs.	psi.	kg.	kPa.	lbs.	psi.	kg.	kPa.
7.00R16LT	14	G	118/114	M	81	15.2	12.1	5.50F	2910	112	1320	770	2600	112	1180	770
7.50R16LT	16	H	125/121	L	75	17.8	14.1	6.00G	3640	126	1650	870	3195	126	1450	870
8.25R16LT	16	H	128/124	K	68	18.4	14.6	6.50H	3970	112	1800	770	3525	112	1600	770
8.25R20	16	H	139/137	K	68	19.7	15.6	6.5	5355	135	2430	930	5070	135	2300	930
9.00R20	16	H	144/142	K	68	20.0	15.9	7.0	6175	130	2800	900	5850	130	2650	900
12.00R24	20	L	160/157	K	68	20.0	15.9	8.5	9920	130	4500	900	9090	130	4125	900
12.00R20	20	L	156/153	K	68	21.3	16.9	830.00	8820	130	4000	900	8050	130	3650	900
325/95R24	22	M	162/160	K	68	19.6	15.6	9.00	10500	120	4750	830	9920	120	4000	830

# SUPER MA31



- Zig-zag grooves design to increase road holding on slippery surfaces.
- The tread can provide good wear resistance and long mileage.
- Offset block shoulder design provide outstanding traction and promotes even wear.
- Application specific compound to help resist aggression from chipping and cutting.

Size	PR	Load Range	Load Index	Speed Rating	Max Speed mph	Tread Depth		Standard Rim	Max Tire Load Single				Max Tire Load Dual			
						32nds	mm		lbs.	psi.	kg.	kPa.	lbs.	psi.	kg.	kPa.
11R22.5	16	H	148/145	K	68	18.4	14.6	8.25	6940	123	3150	850	6395	123	2900	850
11R24.5	16	H	149/146	K	68	18.4	14.6	8.25	7160	120	3250	830	6610	120	3000	830
12.00R20	18	J	154/151	K	68	18.4	14.6	8.5	8270	120	3750	830	7610	120	3450	830

# SUPER MA321



- Optimized cap profile and durable tread compound provide excellent mileage.
- The angled tread blocks deliver excellent traction.
- Large deep shoulder groove improves traction and helps the tire run cool.

Size	PR	Load Range	Load Index	Speed Rating	Max Speed mph	Tread Depth		Standard Rim	Max Tire Load Single				Max Tire Load Dual			
						32nds	mm		lbs.	psi.	kg.	kPa.	lbs.	psi.	kg.	kPa.
12R22.5	18	J	152/149	L	75	20.0	15.9	9.00	7830	135	3550	930	7160	135	3250	930



# SUPER MA358



- The special pattern design provides excellent driving and grip on the compound surface.
- Wider tread design makes tires more durable.
- Transverse wave groove design provides the outstanding loading capacity of tires.
- The new formulation ensures the adaptability of the tires in various pavement environments.

Size	PR	Load Range	Load Index	Speed Rating	Max Speed mph	Tread Depth		Standard Rim	Max Tire Load Single				Max Tire Load Dual			
						32nds	mm		lbs.	psi.	kg.	kPa.	lbs.	psi.	kg.	kPa.
12.00R24	20	L	160/157	K	68	19.7	15.6	8.5	9920	130	4500	900	9090	130	4125	900

# SUPER MD6++



- Unique block drive wheel tread design provides strong driving force and grip
- Open shoulder design, high heat dispersion efficiency of the grooves, which enhances the driving performance of the tire.
- Adopt a new high wear resistant and low heat generation formula design to ensure the excellent endurance performance.
- The new carcass steel wire material is used to ensure the bearing capacity of the tire and make it safer to use.

Size	PR	Load Range	Load Index	Speed Rating	Max Speed mph	Tread Depth		Standard Rim	Max Tire Load Single				Max Tire Load Dual			
						32nds	mm		lbs.	psi.	kg.	kPa.	lbs.	psi.	kg.	kPa.
12.00R20	24	N	160/157	D	40	27.0	21.4	8.5	9920	140	4500	970	9090	140	4125	970

# SUPER MD2



- Increased tread width and groove depth design for on and off road services, features high resistance to laceration, high traction on rough terrains and mud, mileage and acoustic comfort on asphalted road.
- Great Wall shaped edges design enhances grip for slippery surfaces.
- Continuous stone ejectors fight stone retention and drilling to preserving the casing, thus ensuring high durability performance.
- House shaped blocks shoulder design grants excellent lateral grip in slippery conditions.

Size	PR	Load Range	Load Index	Speed Rating	Max Speed mph	Tread Depth		Standard Rim	Max Tire Load Single				Max Tire Load Dual			
						32nds	mm		lbs.	psi.	kg.	kPa.	lbs.	psi.	kg.	kPa.
11R24.5	16	H	149/146	L	75	32.0	25.4	8.25	7160	120	3250	830	6610	120	3000	830

# SUPER MIX D8



- Big block design provides better traction and even wear.
- Reinforced sidewall with higher thickness ensures high impact resistance and durability.
- Special tread compound formulation provides resistance to aggressions and abrasion.

Size	PR	Load Range	Load Index	Speed Rating	Max Speed mph	Tread Depth		Standard Rim	Max Tire Load Single				Max Tire Load Dual			
						32nds	mm		lbs.	psi.	kg.	kPa.	lbs.	psi.	kg.	kPa.
12.00R20	22	M	158/155 (156/153)	J(F)	62	25.2	20.0	8.5	9370	140	4250	970	8540	140	3875	970



# SUPER MD818



- The directional pattern combined with the deep groove design can effectively improve the driving force and traction performance of the tire
- The large-angle groove wall design can effectively prevent stones from being trapped in the groove, avoid cracks at the bottom of the groove, and further increase the service life of the tire
- The reinforced skeleton material ensures the superior load-carrying performance of the product and makes driving safer.
- Special tread formula design, strong puncture resistance.

Size	PR	Load Range	Load Index	Speed Rating	Max Speed mph	Tread Depth		Standard Rim	Max Tire Load Single				Max Tire Load Dual			
						32nds	mm		lbs.	psi.	kg.	kPa.	lbs.	psi.	kg.	kPa.
315/80R22.5	22	M	160/157(157/154)	J(K)	62	29	22.6	9.00	9920	138	4500	950	9090	138	4125	950

# SUPER MD301



- Increased tread width promotes mileage.
- Directional tread pattern for better traction, acoustic comfort and even wear.
- Reinforced sidewall with higher thickness and special compound ensures high impact resistance and durability.
- Special tread compound formulation to provide resistance to aggressions and abrasion.

Size	PR	Load Range	Load Index	Speed Rating	Max Speed mph	Tread Depth		Standard Rim	Max Tire Load Single				Max Tire Load Dual			
						32nds	mm		lbs.	psi.	kg.	kPa.	lbs.	psi.	kg.	kPa.
12R22.5	18	J	152/149	K	68	23.9	19.0	9.00	7830	135	3550	930	7160	135	3250	930
315/80R22.5	22	M	160/157(157/154)	J(K)	62	27.3	21.7	9.00	9920	138	4500	950	9090	138	4125	950

# SUPER MD9



- Directional mixed pattern design provides extremely good traction.
- Wide and deep transversal grooves provide better road holding and traction on slippery surfaces.
- Open shoulder structure effectively disperses heat.
- Cut and chip resistant compound makes the tire more durable and longer tire life.

Size	PR	Load Range	Load Index	Speed Rating	Max Speed mph	Tread Depth		Standard Rim	Max Tire Load Single				Max Tire Load Dual			
						32nds	mm		lbs.	psi.	kg.	kPa.	lbs.	psi.	kg.	kPa.
225/80R17.5	16	H	123/122	L	75	19.5	15.5	6.75	3415	102	1550	700	3305	102	1500	700

# SUPER MD363



- The aggressive multi-lug design provides exceptional off-road traction.
- The deep tread depth offers a longer tread life and exceptional fuel efficiency.
- Open shoulder design delivers superior stability and uniform wear.
- The enhanced rubber compound improves cut and chunking resistance.

Size	PR	Load Range	Load Index	Speed Rating	Max Speed mph	Tread Depth		Standard Rim	Max Tire Load Single				Max Tire Load Dual			
						32nds	mm		lbs.	psi.	kg.	kPa.	lbs.	psi.	kg.	kPa.
295/80R22.5	20	L	154/149	G	56	27.0	21.4	9.00	8270	123	3750	850	7160	123	3250	850
12.00R24	20	L	160/157	K	68	22.7	18	8.5	9920	130	4500	900	9090	130	4125	900



# SUPER MD398



- Transverse block pattern design provides excellent driving performance.
- The bottom of groove is reinforced with small ribs to reduce stone retention and protect the tire casing.
- Balanced contour design provides longer durability.
- Tread compound formulation improves puncture, cut and scratch resistance.

Size	PR	Load Range	Load Index	Speed Rating	Max Speed mph	Tread Depth		Standard Rim	Max Tire Load Single				Max Tire Load Dual			
						32nds	mm		lbs.	psi.	kg.	kPa.	lbs.	psi.	kg.	kPa.
12.00R20	20	L	156/153	J	62	22.6	17.9	8.5	8820	130	4000	900	8050	130	3650	900

# SUPER MD668



- Increased under tread to reduce the possibility of accidental casing damage
- Wide and deep transversal grooves provide better road holding and traction on slippery surfaces.
- Robust shoulder blocks, massive central rib and optimized sectional transversal grooves ensure resistance to tears and lacerations.
- Cut and chip resistant compound makes the tire more durable and longer tire life.

Size	PR	Load Range	Load Index	Speed Rating	Max Speed mph	Tread Depth		Standard Rim	Max Tire Load Single				Max Tire Load Dual			
						32nds	mm		lbs.	psi.	kg.	kPa.	lbs.	psi.	kg.	kPa.
9.5R17.5	18	J	143/141	J	62	20.0	15.9	6.75	6005	127	2725	875	5675	127	2575	875

# SUPER MD318



- Bulk zigzag transverse pattern design provides excellent driving and gripping force for tires on composite pavement.
- Reasonable balanced contour design with special formula design makes the tire more durable and longer mileage.
- The design of tread groove bottom boss can prevent grit groove from clamping stone, and can effectively prevent tread groove crack.

Size	PR	Load Range	Load Index	Speed Rating	Max Speed mph	Tread Depth		Standard Rim	Max Tire Load Single				Max Tire Load Dual			
						32nds	mm		lbs.	psi.	kg.	kPa.	lbs.	psi.	kg.	kPa.
11.00R20	18	J	152/149	J	62	22.6	17.9	8.0	7830	135	3550	930	7160	135	3250	930

# SUPER MRY8



- Lateral big block pattern design provides strong driving force and grip.
- The stone ejector design at the bottom of the grooves protects from being punctured and effectively improves the service life of the tire.
- The shoulder rib design prevents twist of shoulder during driving, improves tire life.
- Puncture-resistant formula for strong applicability to different road conditions.

Size	PR	Load Range	Load Index	Speed Rating	Max Speed mph	Tread Depth		Standard Rim	Max Tire Load Single				Max Tire Load Dual			
						32nds	mm		lbs.	psi.	kg.	kPa.	lbs.	psi.	kg.	kPa.
12.00R24	20	L	160/157	K	68	22.7	18.0	8.5	9920	130	4500	900	9090	130	4125	900





**OFF ROAD**



**KD2**



**KD3**



**KD65**

# SUPER KD2



- The aggressive multi-lug tread design provides powerful grip and exceptional traction.
- Optimized groove design prevents stone trapping and grants highest mileage.
- Tough bar between blocks optimized to ease self-cleaning, thus ensuring better traction and even wear.
- Special tread compounds improve resistance to cuts, chips, tearing and irregular wear.



Size	PR	Load Range	Load Index	Speed Rating	Max Speed mph	Tread Depth		Standard Rim	Max Tire Load Single				Max Tire Load Dual			
						32nds	mm		lbs.	psi.	kg.	kPa.	lbs.	psi.	kg.	kPa.
225/80R17.5	14	G	123/122	J	62	22.7	18	6.75	3415	102	1550	700	3305	102	1500	700



# SUPER KD3



- Big block pattern design provides excellent driving and gripping performances.
- Self-cleaning, open shoulder tread design help enhance traction and flotation capabilities on varied terrains.
- Reinforced carcass and bead design provide high quality and performance under heavy load conditions.

Size	PR	Load Range	Load Index	Speed Rating	Max Speed mph	Tread Depth		Standard Rim	Max Tire Load Single				Max Tire Load Dual			
						32nds	mm		lbs.	psi.	kg.	kPa.	lbs.	psi.	kg.	kPa.
11R22.5	18	J	149/146	F	50	28.0	22.2	8.25	7160	135	3250	930	6610	135	3000	930
12R22.5	20	L	154/151	F	50	29.9	23.7	9.00	8270	140	3750	970	7610	140	3450	970
295/80R22.5	20	L	154/149	F	50	26.5	21	9.00	8270	123	3750	850	7160	123	3250	850

# SUPER KD65



- Wide and deep tread enables long wear life with stability and durability.
- Lateral grooves with wide angles design increase driving power and self-cleaning abilities.
- Extra thick sidewall design enhances cut and impact resistance.
- Reinforced carcass and bead design provides high quality and performance under heavy load conditions.

Size	PR	Load Range	Load Index	Speed Rating	Max Speed mph	Tread Depth		Standard Rim	Max Tire Load Single				Max Tire Load Dual			
						32nds	mm		lbs.	psi.	kg.	kPa.	lbs.	psi.	kg.	kPa.
11.00R20	18	J	152/149	F	50	31.1	24.7	8.0	7830	135	3550	930	7160	135	3250	930
12.00R20	20	L	156/153	F	50	31.1	24.7	8.5	8820	130	4000	900	8050	130	3650	900

PATTERN SIZE	HA1	HA2	HA3	HA11	HA13	HT1	LA1	LA3	LA266	LF21	LD2	LD3	LD5	LD7	LD117	LD21
	P8	P8	P9	P9	P10	P10	P13	P13	P14	P14	P15	P15	P16	P16	P18	P17
7.00R16LT																
7.50R16LT																
8.25R16LT																●
8.25R20																●
9.00R20																●
9.5R17.5					●											
10.00R20								●								●
11.00R20								●								●
10R22.5																
11R22.5				●								●			●	●
11R24.5				●												
12.00R20																●
12R22.5									●			●				
12.00R24																
215/75R17.5				●												●
225/80R17.5								●								
235/75R17.5				●												●
255/70R22.5																
275/70R22.5					●											
275/80R22.5										●						●
295/60R22.5				●												
295/80R22.5	●										●		●			
315/60R22.5				●												
315/70R22.5		●								●	●			●		●
315/80R22.5	●										●					●
385/55R22.5	●															
385/65R22.5	●		●			●										
425/65R22.5																



PATTERN SIZE	LD23	LD25	LD26	LT1	LT23	LT258	LT288	LT260	MAE8	MA1	MA31	MA32	MA321	MA358	MD2	MD6++
	P18	P19	P19	P20	P20	P21	P21	P22	P22	P29	P29	P30	P30	P31	P31	P32
7.00R16LT												●				
7.50R16LT										●		●				
8.25R16LT										●		●				
8.25R20										●		●				
9.00R20										●		●				
9.5R17.5																
10.00R20										●						
11.00R20										●						
10R22.5																
11R22.5		●	●								●					
11R24.5			●								●			●		
12.00R20									●	●	●	●				●
12R22.5						●		●					●			
12.00R24												●		●		
215/75R17.5																
225/80R17.5																
235/75R17.5																
255/70R22.5																
275/70R22.5																
275/80R22.5																
295/60R22.5	●						●									
295/80R22.5																
315/60R22.5	●															
315/70R22.5																
325/95R24												●				
385/55R22.5				●	●											
385/65R22.5		●		●												
425/65R22.5		●			●											

PATTERN SIZE	MIX D8	MD818	MD9	MD301	MD363	MD398	MD318	MD668	MRY8	KD2	KD3	KD65	UA82	WD2	WD7
	P32	P33	P33	P34	P34	P35	P35	P36	P36	P38	P39	P39	P24	P26	P26
7.00R16LT															
7.50R16LT															
8.25R16LT															
8.25R20															
9.00R20															
9.5R17.5								●							
10.00R20															
11.00R20							●					●			
10R22.5													●		
11R22.5											●		●		●
11R24.5														●	
12.00R20	●					●						●			
12R22.5				●							●				
12.00R24					●				●						
215/75R17.5													●		
225/80R17.5			●							●					
235/75R17.5													●		
255/70R22.5															
275/70R22.5													●		
275/80R22.5															
295/60R22.5															
295/80R22.5					●						●		●		
315/60R22.5															
315/70R22.5															
315/80R22.5		●		●											
385/55R22.5															
385/65R22.5															
425/65R22.5															



# RECOMMENDATIONS FOR THE SAFE USE OF AUFINE RADIAL TRUCK TYRES

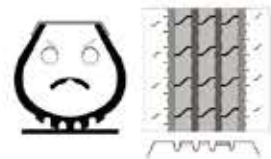
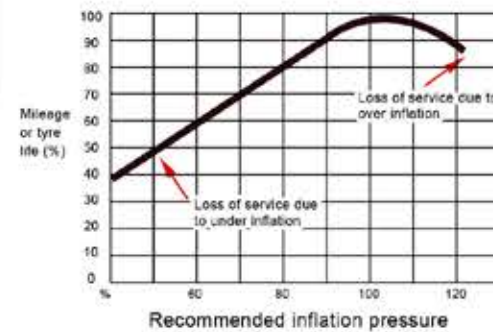
Important instructions for safe inflation

Tyre pressure directly influences tyre life and safety

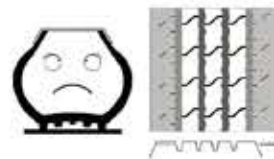
Over-inflation reduces:	Under-inflation leads to:
<ul style="list-style-type: none"> <li>• Comfort</li> <li>• Grip</li> <li>• Braking distance</li> <li>• Tyre life span, particularly on drive axle tyres.</li> <li>• Safety</li> </ul>	<ul style="list-style-type: none"> <li>• Reduced vehicle handling and safety</li> <li>• A reduction in casing retreadability</li> <li>• An increase of rolling resistance consequently.</li> </ul>



Effect of inflation pressure on tyre life



Over-inflation



Under-inflation

### ADVICE BEFORE INFLATION

- 1 Weigh your vehicle and its load, axle by axle, to determine tyre pressure.
- 2 Measure the pressure when cold (when the vehicle has been stationary for several hours): pressures must be checked at regular intervals and during each service.
- 3 Important safety instruction: pressure increases when the vehicle is in motion, never reduce the pressure of a hot tyre.

### METHOD OF INFLATION



- With inflation cage**
- Place the tyre vertically in the inflation cage
  - Read the cage user manual



**Without inflation cage**

Step 1



Step 2



**Caution:**

Driving with insufficient pressure can damage your tyres. After having driven with an underinflated tyre, do not re-inflate tyre: have your tyres fully checked over by an expert.

## TECHNICAL TABLES LEGEND

### (S) SECTION WIDTH (MM)

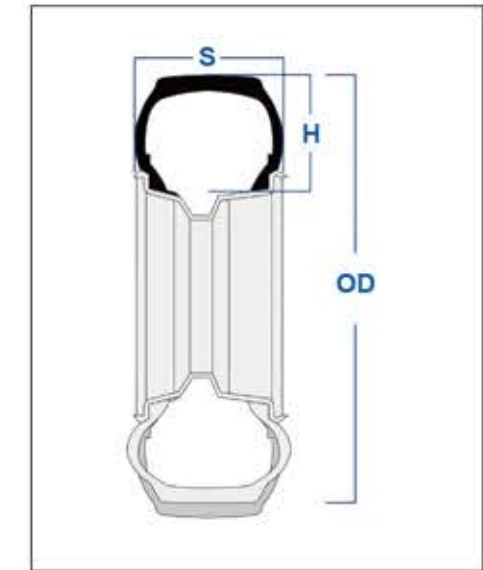
The linear distance between the outsides of the sidewalls of an inflated tyre excluding elevations due to labelling (marking), design application indicators, protective bands or ribs.

### (H) SECTION HEIGHT (MM)

Half difference between the overall diameter and the nominal rim diameter.

### (OD) OVERALL DIAMETER (MM)

The diameter of an inflated tyre at the outermost surface of the tread.



## CONVERSION FACTORS

TO CONVERT FROM	INTO	MULTIPLY BY
mm inch	Inch mm	0.03937 25.4
Kg lbs	lbs kg	2.2046 0.4536
Bar Kg/cm <sup>2</sup>	Kg/cm <sup>2</sup> bar	1.01972 0.98066
Bar lbs./sq.inch(psi)	lbs./sq.inch(psi) bar	14.5033 0.06895
bar	kpa	100
lbs./sq.inch(psi)	kpa	6.895
Bar lbs./sq.inch(psi)	lbs./sq.inch(psi) bar	0.62137 1.60935

## SPEED SYMBOLS [KM/H&MPH]

SYMBOL	E	F	G	J	K	L	M
KM/H	70	80	90	100	110	120	130
M.P.H.	43	50	56	62	68	75	81